

# VERCO

## LOADERS

A GRYB COMPANY

LIFTING EXPECTATIONS

160/160PH SERIES



# LIFTING EXPECTATIONS

The SERCO 160 and 160PH are extremely popular models in the Western U.S. and Canadian forestry industry. They've also been a great fit for utility companies, heavy construction, and railroad applications.



## Lift Capacity

Up to 17,797 lbs. lift capacity (less weight of attachment).

## Boom Reach

25 ft. knuckleboom or 29 ft. reach with optional telescopic boom.

## Rotation

400 degree rotation with mechanical stops and in-line hose swivels.

## Stabilizers

Fold-a-way type stabilizers with 14' 6" spread.

### Hydraulic System

- Triple gear pump.
- Operating pressure: 2,450 PSI.
- Stack type control valves located under seat.
- 55 gallon in-frame hydraulic oil reservoir with high-capacity, 10 micron return filter and removable access cover.
- Four-wire reinforced hydraulic hose in all pressure applications.

### Options

- Various grapples and attachments.
- Remote truck frame mounted hydraulic oil reservoirs.
- Hydraulic oil coolers.
- Continuous rotation with hydraulic collector.
- LED light kits.
- Telescopic boom.
- Mechanical outboard joystick control package.
- Operator's cab.
- Seat belt included.
- Magnet generator packages.

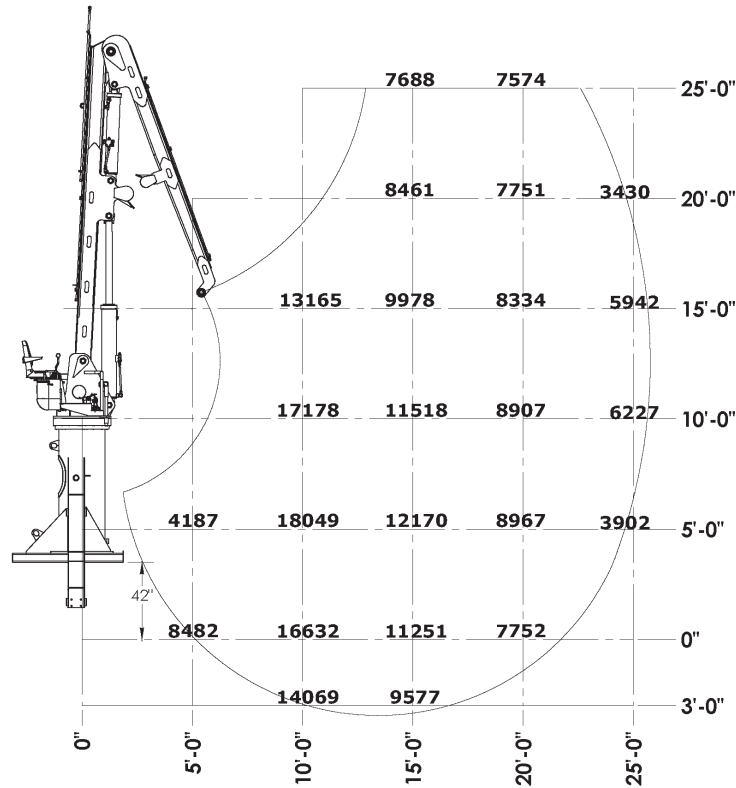
# NEXT-LEVEL PERFORMANCE



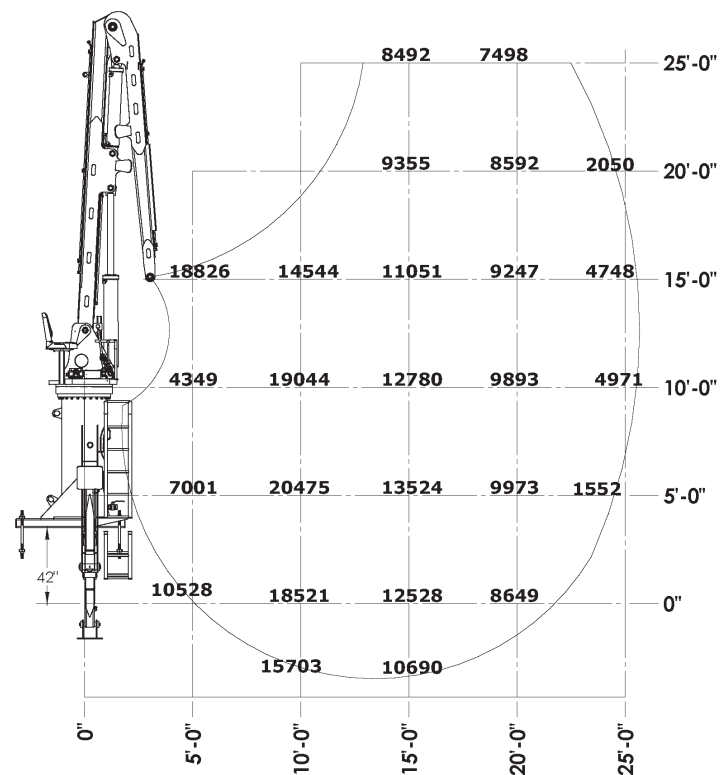
## LIFT DIAGRAM

Capacities shown are maximum theoretical lift capacities based on loader system pressure rating indicated, loader is mounted on adequately sized vehicle, stabilizers deployed in down position and the entire unit is on firm, level ground.

160 Series



160PH Series



# SERCO 160PH

## KEY SPECIFICATIONS- SERCO 160PH

Structure	Plated tube type main & jib booms backed by the industry best, 3-year structural warranty
Pivots	2.5" boom pivots, 2.5" cylinder pivots
A-Frame Stabilizers	Fold-a-way type 6" x 24" cylinders with 14 ft 6" spread at grade level
Complete Motion	Main boom: 11.2 sec full down - full up Jib boom: 6.9 sec full in - full out
Slewing Ring	30" (762 mm) diameter, external tooth
Rotation Speed	5.5 RPM
Weight	10,000 lbs. (4,536 kg)
Operating Pressure	2,450 psi (169 bar)
Swing Torque	26,302 ft. lbs

## BOOM LENGTH OPTIONS- SERCO 160PH

Standard	25' (7.62m)
Non-Telescopic	25'
Telescopic	25', 4' (1.2 m) squirt. Maximum length 29' (8.84 m)

## SERCO 160PH (25 ft./7.62 m) LOADER LIFT CAPACITY (lb/kg)

		DISTANCE FROM CENTRE OF ROTATION (ft./m)			
		5 FT. / 1.5 m	10 FT. / 3 m	15 FT. / 4.5 m	20 FT. / 6 m
SERCO 160PH	HEIGHT				
	30 ft. / 9 m			8,540 / 3,874	
	25 ft. / 7.5 m			8,532 / 3,870	7,418 / 3,365
	20 ft. / 6 m			9,394 / 4,261	8,631 / 3,915
	15 ft. / 4.5 m	20,180 / 9,153	14,599 / 6,622	11,092 / 5,031	9,285 / 4,212
	10 ft. / 3 m	4,542 / 2,060	19,102 / 8,865	12,821 / 5,815	9,928 / 4,053
	5 ft. / 1.5 m	7,145 / 3,241	20,523 / 9,309	13,561 / 6,151	10,004 / 4,538
	0 ft. / 0 m	10,621 / 4,818	18,550 / 8,414	12,555 / 5,695	8,666 / 3,931

\* Lifting capacities calculated at 100% operating pressure

\* Lifting capacity is limited by stick boom hydraulic capacity

\* Maximum load must never exceed - 20,523 lbs (9,039 kg)

We reserve the right to change specifications & improve our products without notice or obligation



# YOUR NEW LOADER AWAITS!

**CONTACT OUR TEAM TODAY!**

**(218) 834-5118**

**[serco@sercoloaders.com](mailto:serco@sercoloaders.com)**

**[sercoloaders.com](http://sercoloaders.com)**

