

SERCO

LOADERS
A GRYB COMPANY

LIFTING EXPECTATIONS
1050XR SERIES



LIFTING EXPECTATIONS

Modeled after our popular SERCO 8500, the SERCO 1050XR features increased lift capacity and a rugged, durable design making it an ideal choice for logging, scrap, railroad, heavy hauling applications.

Lift Capacity

11,049 lbs. lift capacity at 10 ft. radius (less weight of attachment).

Boom Reach

22 ft. fixed length boom standard. Fixed length and telescoping booms available to 29 ft.

Rotation

Continuous on double-row turntable bearing.

Stabilizers

Telescoping A-frame type with 117-3/4" spread at grade level for adjustment on uneven terrain.



NEXT-LEVEL PERFORMANCE

Hydraulic System

Tandem hydraulic circuits to allow simultaneous operation without power loss.

Tandem gear pump providing 30 & 30 GPM at 1,400 pump RPM.

Stack type control valves located under seat for increased operator visibility, safety. Including necessary relief and anti-cavitation valves for machine protection.

50 gallon A-frame mounted hydraulic reservoir with high capacity, 10-micron return line filter and removable access cover (aluminum and steel remote hydraulic tanks also available).

Folding joystick controls standard. Four-wire reinforced hoses in all pressure applications.

SERCO hydraulic manifold with ductile iron center spool & chrome-plated housing for continuous swing rotation.

Miscellaneous

- Three-point greasing system for turntable bearing and pinion gear.
- Mechanical swing lock for safety during transit.
- Dual, heavy-duty ladders.
- Telescoping jib boom with separate valve and foot control.
- LED light kits
- Full range of attachments including continuous rotation grapples.
- Hydraulic oil coolers.
- Sealt belt included.
- Bolt-on gland cylinders.

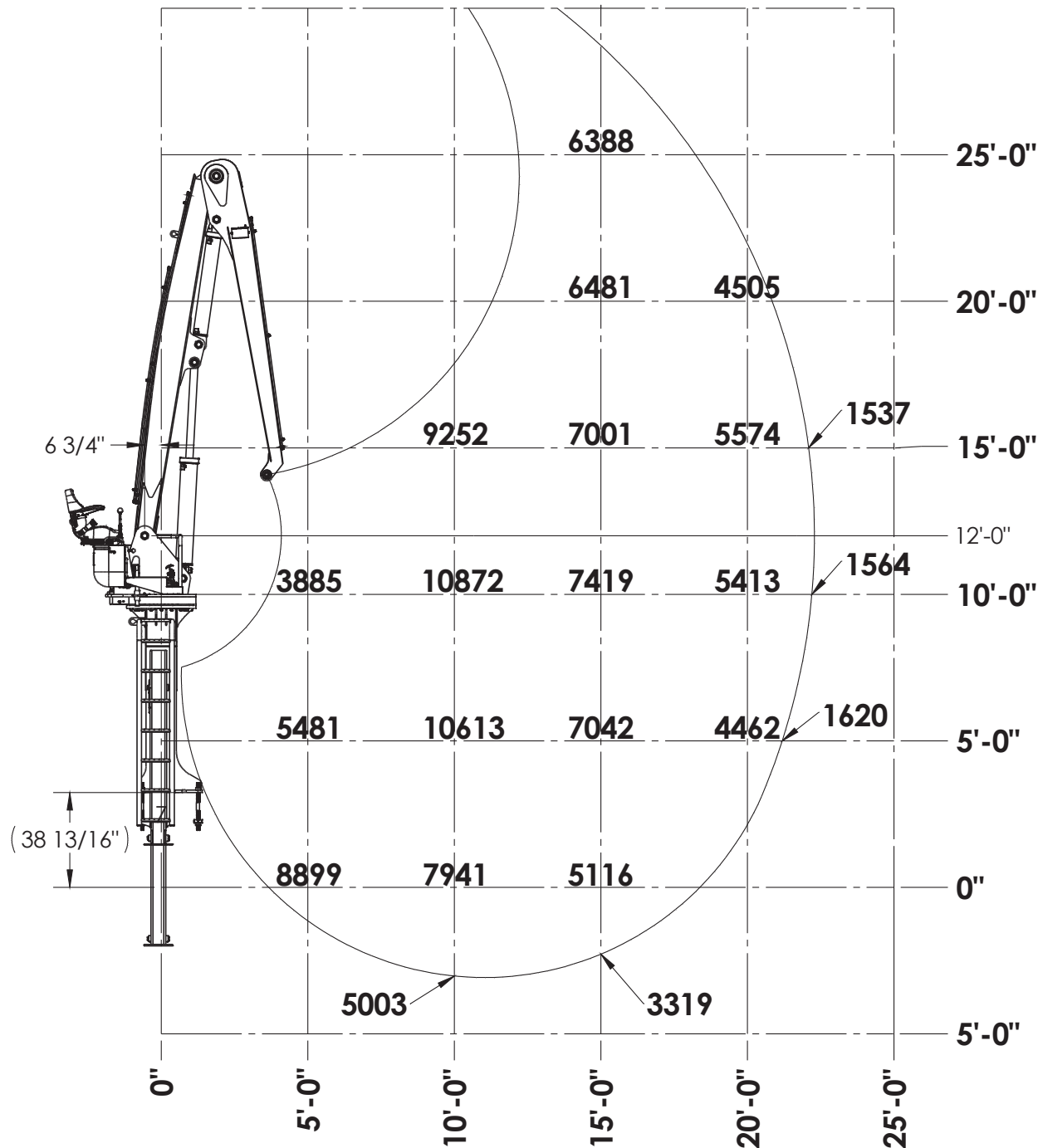
LIFT DIAGRAM

Capacities shown are maximum theoretical lift capacities based on loader system pressure rating indicated, loader is mounted on adequately sized vehicle, stabilizers deployed in down position and the entire unit is on firm, level ground.

CAPACITIES SHOWN ARE MAXIMUM THEORETICAL LIFT CAPACITIES (LESS ATTACHMENT) BASED ON LOADER SYSTEM PRESSURE INDICATED. LOADERS IS MOUNTED ON ADEQUATELY SIZED VEHICLE, STABILIZERS DEPLOYED IN DOWN POSITION AND THE ENTIRE UNIT IS ON FIRM, LEVEL GROUND. IT IS HIGHLY RECOMMENDED THAT PRIOR TO INSTALLATION OF THIS LOADER ONTO TRUCK THAT A STABILITY CALCULATION OR TEST BE PERFORMED TO ENSURE PROPER STABILITY AND OPERATION OF LOADER ON CUSTOMER VEHICLE.

2500 PSI MAIN CYL. OPERATING PRESSURE
 2500 PSI MAIN CYL. RELIEF SETTING
 2500 PSI JIB CYL. OPERATING PRESSURE
 3000 PSI JIB CYL. RELIEF SETTING (BORE & ROD SIDE)

5013461 - MAIN BOOM(12')
 5000915 - JIB BOOM(10')
 6.0" MAIN BOOM CYL
 5.0" JIB CYL



SERCO 1050XR

| KEY SPECIFICATIONS- SERCO 1050XR | |
|-----------------------------------|--|
| Structure | Fabricated box type main & jib booms backed by the industry best, 3-year structural warranty |
| Pivots | 2.5" boom pivots, 2" cylinder pivots |
| A-Frame Stabilizers | 3" x 44" cylinders with 117.75" spread at grade level |
| Complete Motion | Main boom: 8.6 sec full down - full up Jib boom: 5.9 sec full in - full out |
| Stewling Ring | 27.31" (693.67 mm) diameter, external tooth |
| Rotation Speed | 8.6 RPM |
| Weight | 7,900 lbs. (3,583 kg) |
| Operating Pressure | 2,500 PSI (172 bar) |
| Swing Torque | 24,258 ft. lbs |
| BOOM LENGTH OPTIONS- SERCO 1050XR | |
| Standard | 22' (6.7 m) |
| Non-Telescopic | 24' (7.3 m), 25' (7.6 m), 28' (8.5 m), 28.5' (8.7 m) & 29' (8.8m). Most common 29' |
| Telescopic | 22' (6.7 m), 24' (7.3 m), 25' (7.6 m). 4' (1.2 m) squirt extension. Maximum length 29' |

| SERCO 1050XR (22 ft./6.7 m) LOADER LIFT CAPACITY (lb/kg) | | | | | |
|--|----------------|--|----------------|----------------|---------------|
| | | DISTANCE FROM CENTER OF ROTATION (ft./m) | | | |
| HEIGHT | | 5 FT. / 1.5 m | 10 FT. / 3 m | 15 FT. / 4.5 m | 20 FT. / 6 m |
| SERCO 1050XR | 30 ft. / 9 m | | | | |
| | 25 ft. / 7.5 m | | | 6,388 / 2,898 | |
| | 20 ft. / 6 m | | | 6,481 / 2,340 | 4,505 / 2,043 |
| | 15 ft. / 4.5 m | | 9,252 / 4,197 | 7,001 / 3,176 | 5,574 / 2,528 |
| | 10 ft. / 3 m | 3,885 / 1,762 | 10,872 / 4,931 | 7,419 / 3,365 | 5,413 / 2,455 |
| | 5 ft. / 1.5 m | 5,481 / 2,486 | 10,613 / 4,814 | 7,042 / 3,194 | 4,462 / 2,024 |
| | 0 ft. / 0 m | 8,899 / 4,032 | 7,941 / 3,602 | 5,116 / 2,321 | |

* Lifting capacities calculated at 100% operating pressure
 * Lifting capacity is limited by stick boom hydraulic capacity
 * Maximum load must never exceed - 10,872 lbs (4,931 kg)
 We reserve the right to change specifications & improve our products without notice or obligation



YOUR NEW LOADER AWAITS!

CONTACT OUR TEAM TODAY!

(218) 834-5118

serco@sercoloaders.com

sercoloaders.com

